

Enter our "Friend Of The Hobby."

A new twist <g> Request for chip info came in reverse.

Our "Friend of the Hobby" emailed "ME" asking if I needed a FMR, ED, and FD in a horseshoe hubs. He had a bad scan from a seller. Looked like ED with partially wore off D. He ask if I happened to have the ID's. I did. I sent them. Yes I needed the chips!

Special note: To a special friend. Remember this day as the day I warned you about the "Slippery Slope." <g> Sorry I could not resist a small practical joke only 5 people in the world will get. <g>

BTW you can look for Future "Illegal Of The Day" posts on the FMR and FD in horseshoe chips. <g> FMR is Ivy Miller/Benny Binion/Southland Hotel/Dallas. FD in Horseshoe is a new Houston illegal.

A little explanation: L's and D's on worn hubs can be a little tricky. Some L's have what I call phantom lines on the hot stamps. You almost have to have the chip in hand and a loupe to tell them apart. There are a couple other letters in this font that have similar phantom lines.

Second email about the chips:

Chips arrived.

While I was packing up the FMR, ED & FD horseshoe hubs to take to the post office tomorrow I stopped and took a closer look at the ED—I'm not sure it's ED. All 6 six chips are very worn.

Of the 12 different sides to the 6 chips, the 3 hot stamps below are probably the clearest. It looks to me more like EL. What do you think?



EL-2att2

My note: By golly I think he is right. The actual letters hand written on the original Mason record proved it. My fault. I did not look at the written letters only the actual hot stamp with the phantom lines.

All of a sudden we have a new Galveston illegal instead of a new California chip. That should make the Texas boys happy. <g> Three new Texas illegals in one day, may be a 1st.

Enough of that:

Texas:



EL-1att2

EL

C.A. Evans

Elite Restaurant

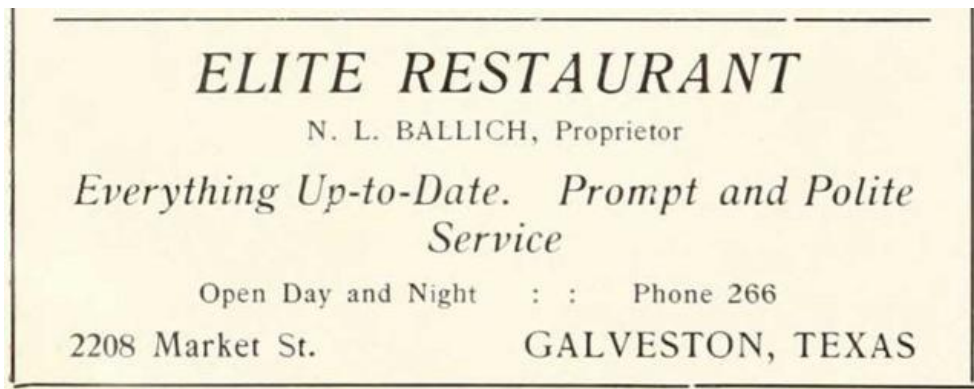
2208 Ave D

Galveston, TX

500 white, 200 yellow, 200 black, 100 blue

6/16/1934

EL



EL-3att2

The Elite Restaurant, or Elite Café, was opened by Nicholas Ballich on Market Street (Ave D) on October 25th 1900—45 days after the devastating Hurricane of 1900 had destroyed much of the city and left thousands dead. Ballich was still running the Elite when Clarence A. Evans had the EL chips delivered to the Café in June of 1934. Evans, an Illinois native, moved to Galveston in the early 1910's from Tyler, Texas where he had operated a billiard hall and upon his arrival at the Texas coast he did the same thing (initially with his father Albert who owned a couple of pool halls).

A few months prior to Evan's 1934 order, the Elite had been completely renovated:

...Announcing the Re-Opening
of the.

Elite Cafe

TODAY

We sincerely extend an invitation to our old and new patrons and to all Galveston to attend our opening today! We open our new establishment with Faith in the future of our city and with a desire to serve you in the future as we have in the past.



"The Prettiest—
Largest Dining Room
in the City."

Galveston's Oldest Cafe—The Elite—has been completely remodeled — many additions and new improvements have been made — new modern equipment installed — in order to turn this cafe into an ultra-modern establishment thereby following our policy of keeping just a step ahead of times!

**Fast Counter Service
For Those Persons Who
Are in a Hurry!**

Only finest of foods—properly cooked and seasoned, the kind this cafe has been famous for during the past 33 years (established in 1900) will be served at the new Elite! Whether you order a banquet, dinner, sandwich, coffee or a glass of beer, you will receive only the best money can buy. Served in a quiet homelike surroundings by a waiter that is both courteous and considerate.

**And It Will Cost You
No More!**



You favorite 3.2 beer on tap or in bottles, served with sandwiches and meals.

Elite Cafe

2208 MARKET ST.

EL-4att2

"It has always been the policy of the Elite Cafe to keep up with the times," Mr. Ballich said. "In remodeling the cafe for the seventh time we are anticipating the future wants of the public. Nothing has been left undone."

The cafe has been redecorated in cream and white trimmed in apple green. Modernistic lights have been installed throughout.

The dining room on the east side of the cafe will be continued and there will be a special room at the rear for private parties.

EL-5att2

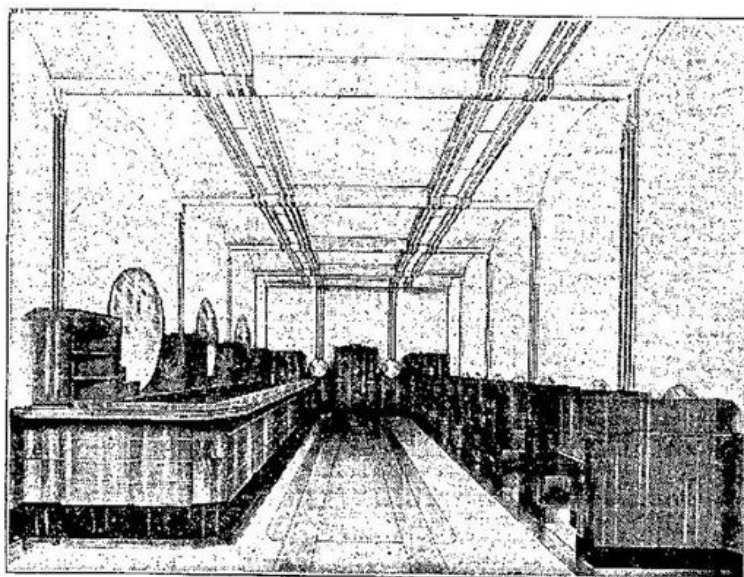
It's possible that the new "special room at the rear for private parties" was the Elite Club.

--snip from the 1934 city directory:

Elite Cafe (N L Ballich) 2208 Avenue D
" Club 2208½ Avenue D

EL-6att2

One of the reasons the Elite was remodeled is that it needed to keep up with its new neighbor, the Turf Grill, which had just opened in October 1933:



Announcing the Formal Opening of Galveston's Newest and Most Modern Bar!

SATURDAY NIGHT, OCTOBER 21ST, AT 6 O'CLOCK

In Architectural Achievement, Beauty of Appointments Employing Modernistic Motif, and the Policy of Service we hope to persue, the New Turf Grill is expected to prove a revelation to the thirsty and become the first oasis of distinction in Galveston. All legalized beverages constantly on hand, including your favorite brew and the choicest wines from which to choose. Meet your friends here for that moment of relaxation and refreshment.

"A BAR FOR LADIES AND GENTLEMEN"

THE TURF GRILL

2216 MARKET ST.

TONY DEL PAPA, Manager.

SANDWICHES OF ALL KINDS

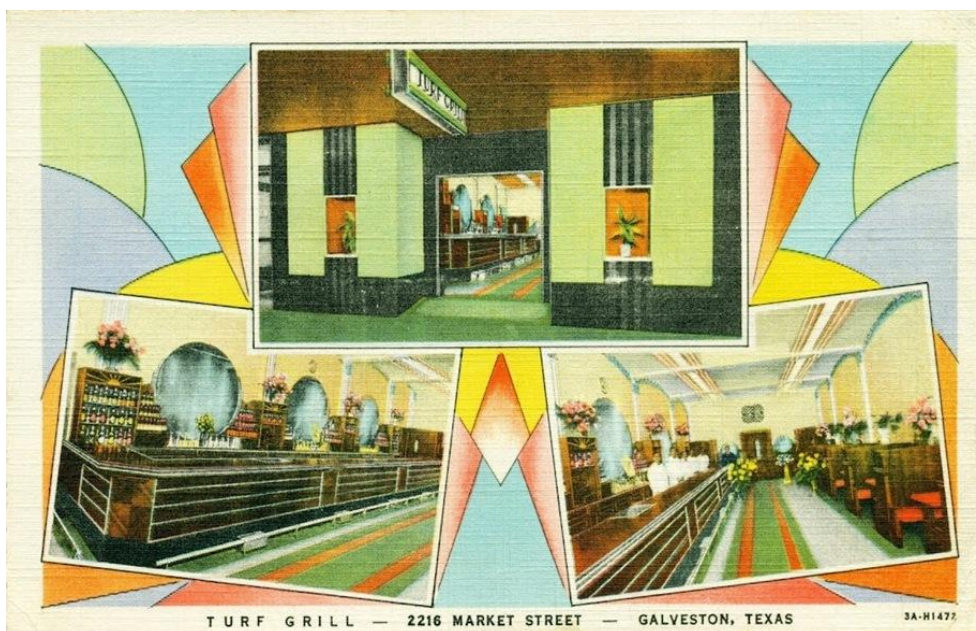


Here's a pic of Market Street from the 1910's. A sign for the Elite at 2208 can be seen on the right. In 1934 the building which housed the Turf Grill at 2216 also housed the Turf Cigar Stand at 2214 and on the 3rd floor Sam Maceo's Turf Gymnasium. The building would be the HQ for the Maceo's enterprises for many years and would be the home of many of their gambling operations including the Western Room and Studio Lounge.



EL-8att2

postcard of Turf Grill:



EL-9att2

In March 1937 a fire destroyed the building which sat between the Elite and the Turf. The building had recently been purchased by the Maceo's and they were storing numerous new slot machines and other gambling equipment there which was all destroyed by the fire. Neither the Turf nor the Elite was hurt by the flames but the Elite was damaged when the building which burned collapsed and fell on its roof.



EL-10att2

After the fire Ballich moved the Elite from the downtown location it had occupied for 37 years to a new spot on the beachfront at 3502 Seawall Boulevard. Ballich died in 1946 and the Elite closed down in 1953. Evans seems to have disappeared from Galveston around the time of the Elite's move in 1937.

My note: The Maceo's and the Fertitta's were the two big operators of illegals in the Galveston area. Similar to other illegal operators from Northern KY, Detroit, etc, when the "Era Of The Illegals" ended, the Fertitta's moved on to Las Vegas and their heirs now own Station Casinos, the biggest company by far, catering to the "Local's" market in Las Vegas.